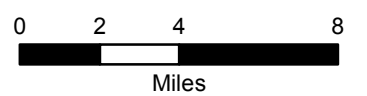


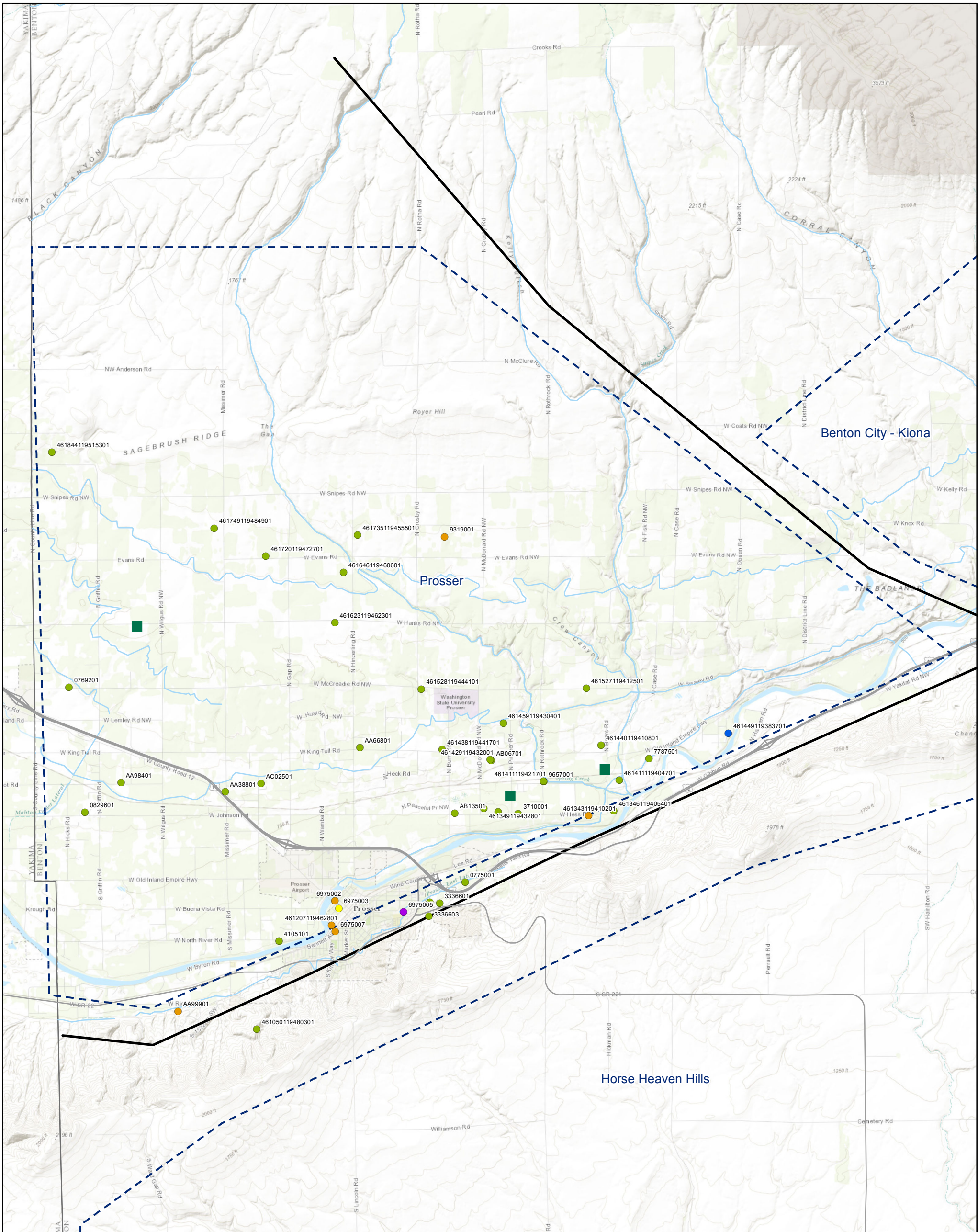
Figure 7.
Historically Sampled
Wells (1971 - 2011)
Benton County, WA

Legend

Well Hydrostratigraphy

- | | | |
|--|---|--|
| ● alluvial | ● shallow, intermediate, and deep basalt | ■ Livestock: Dairy or Feedlot |
| ● alluvial and shallow basalt | ● intermediate basalt | Hanford |
| ● shallow basalt | ● intermediate and deep basalt | Highways |
| ● shallow and intermediate basalt | ● deep basalt | Simplified Major Structures |
| General Area Boundary | — Canals, Creeks, Canyons | |





Legend

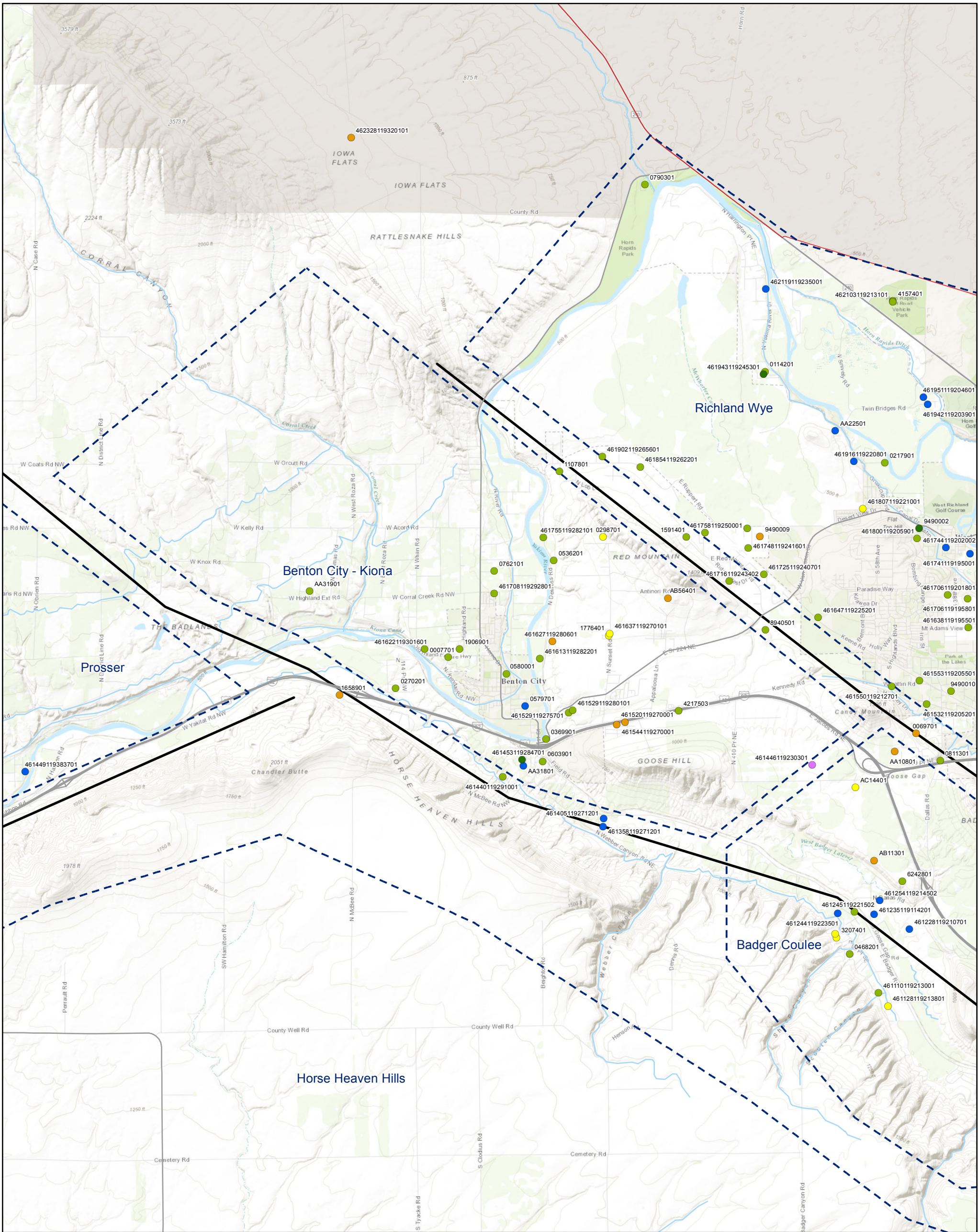
Well Hydrostratigraphy

- alluvial
- shallow basalt
- shallow and intermediate basalt
- intermediate basalt
- deep basalt

- General Area Boundary
- Livestock: Dairy or Feedlot
- Highways
- Simplified Major Structures
- Canals, Creeks, Canyons

Figure 7.1.
Prosser Area
Historically Sampled
Wells (1971 - 2011)
Benton County, WA





Legend

Well Hydrostratigraphy

- alluvial
- alluvial and shallow basalt
- shallow basalt
- shallow and intermediate basalt

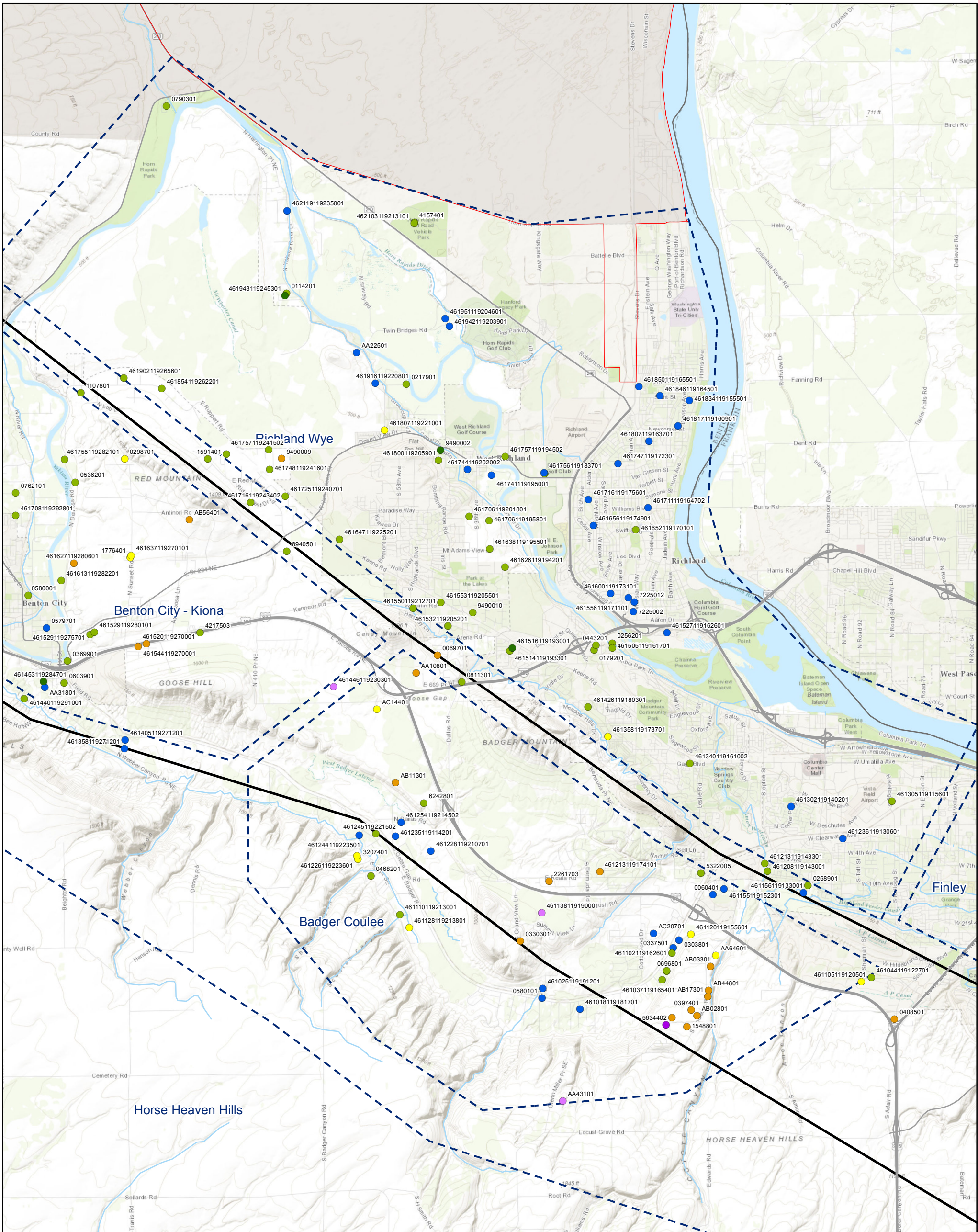
- intermediate basalt
- intermediate and deep basalt

- ▭ General Area Boundary
- ▭ Hanford
- Highways

- Simplified Major Structures
- Canals, Creeks, Canyons

Figure 7.2.
Benton City - Kiona Area
Historically Sampled
Wells (1982 - 2011)
Benton County, WA



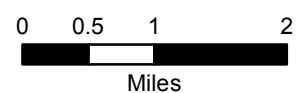


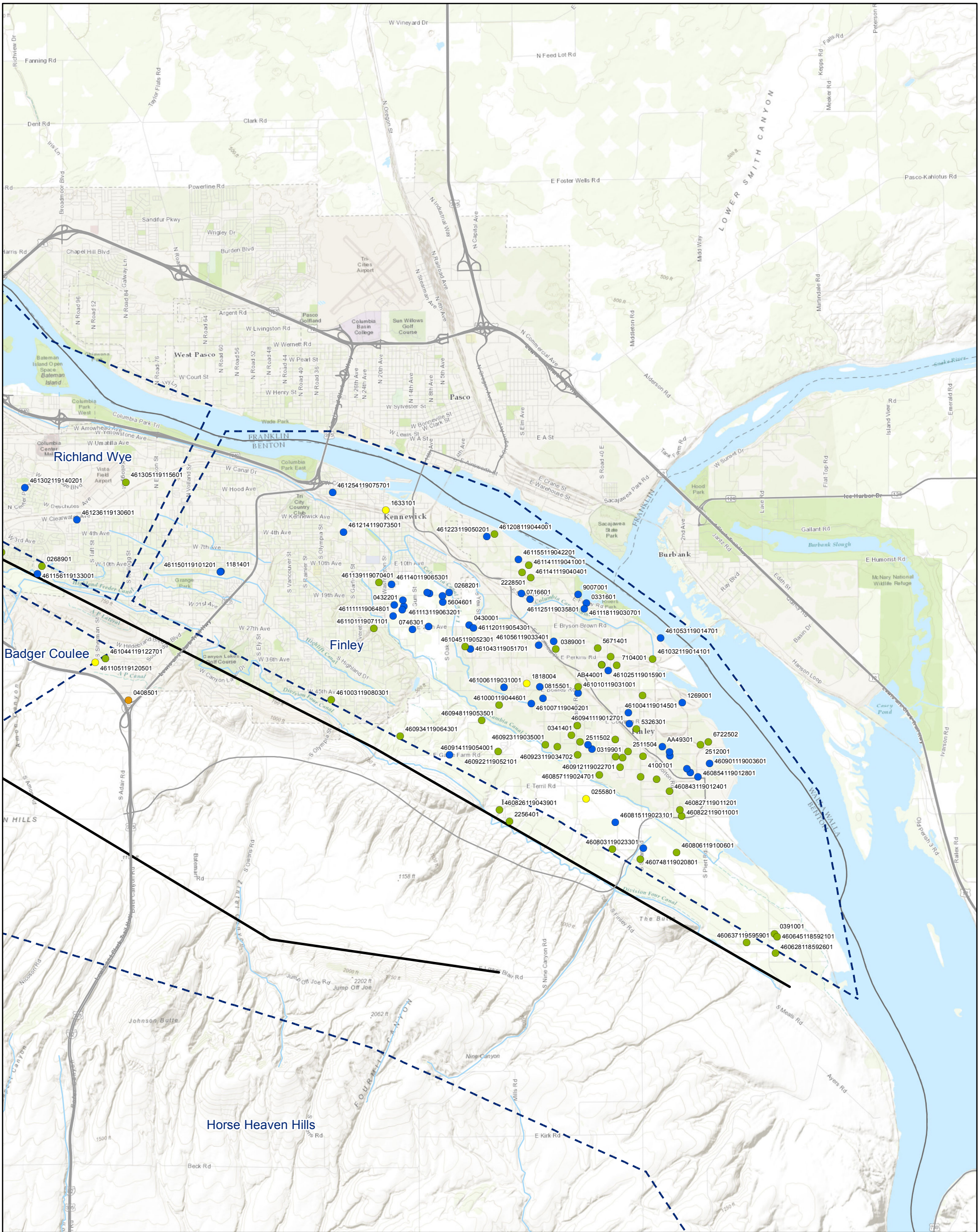
Legend

Well Hydrostratigraphy

- alluvial
- alluvial and shallow basalt
- shallow basalt
- shallow and intermediate basalt
- intermediate basalt
- intermediate and deep basalt
- deep basalt
- General Area Boundary
- Hanford
- Highways
- Simplified Major Structures
- Canals, Creeks, Canyons

Figure 7.3.
Richland Wye and Badger Coulee Area
Historically Sampled
Wells (1971 - 2011)
Benton County, WA





Legend

Well Hydrostratigraphy

- alluvial
- shallow basalt
- shallow and intermediate basalt
- intermediate basalt

General Area Boundary

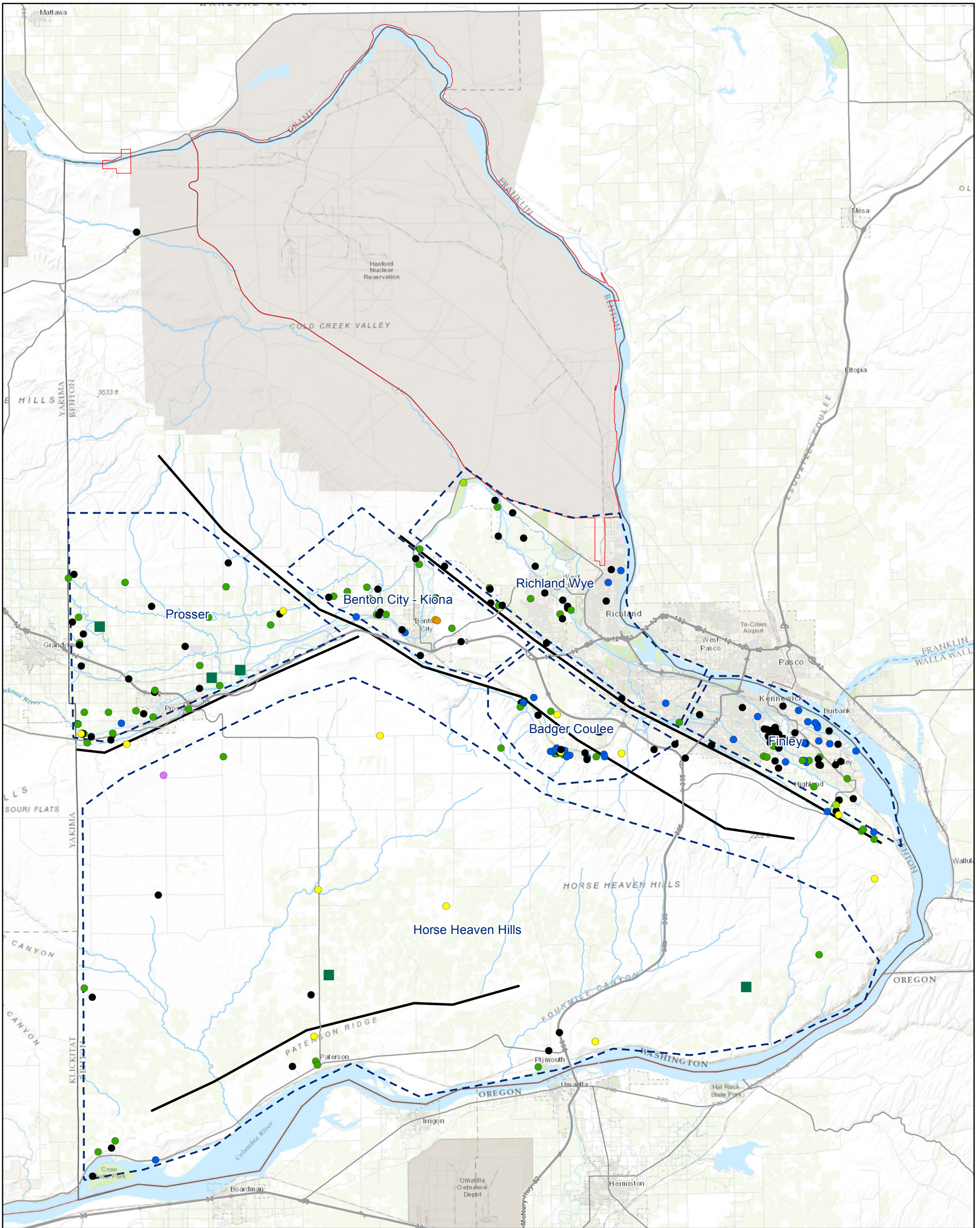
Highways

Simplified Major Structures

Canals, Creeks, Canyons

Figure 7.4.
Finley Area
Historically Sampled
Wells (1971 - 2011)
Benton County, WA





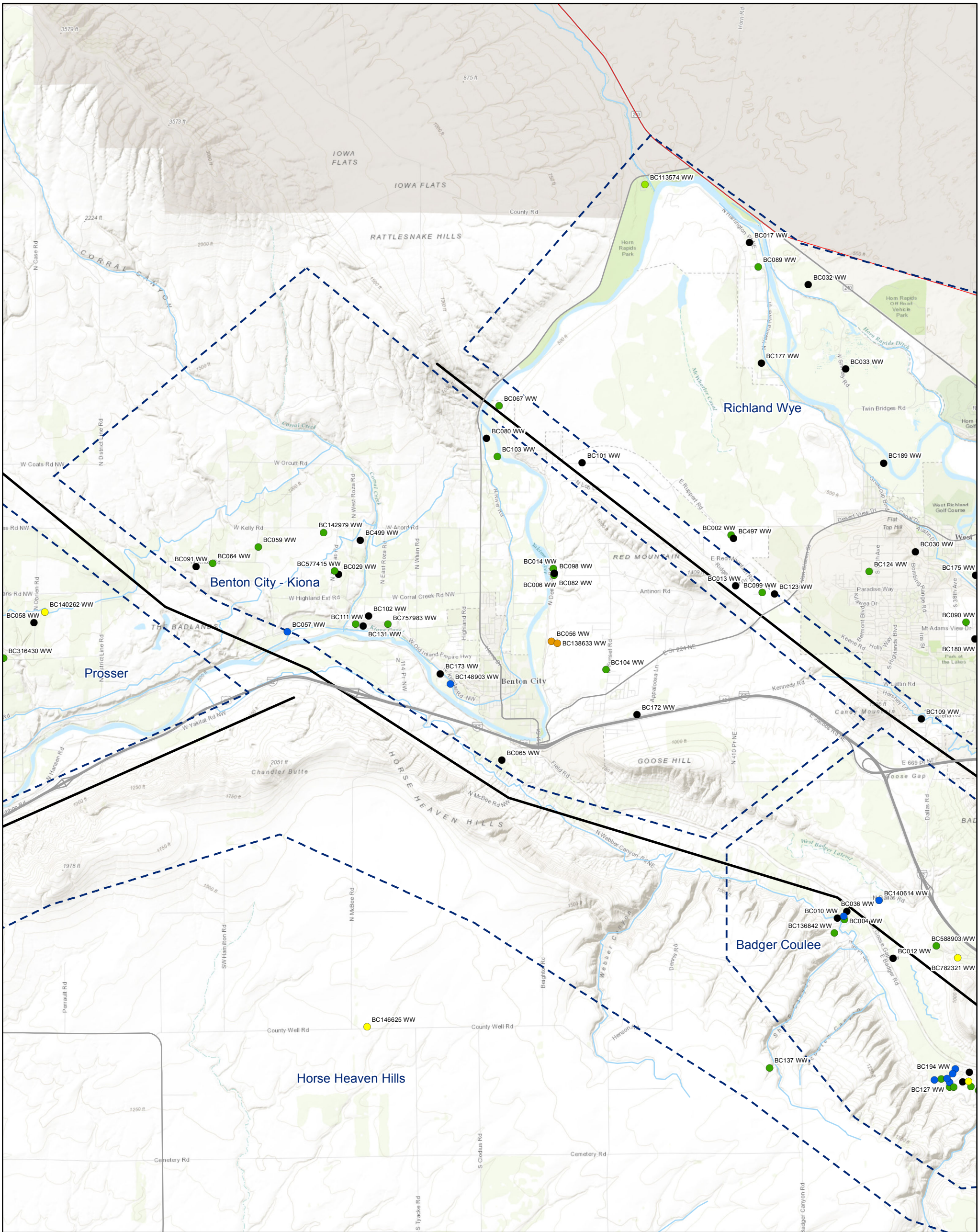
Legend

Well Hydrostratigraphy

- unknown completion
- alluvial
- shallow basalt / shallow basalt & alluvial
- shallow basalt
- shallow & intermediate basalt
- intermediate basalt
- intermediate & deep basalt
- General Area Boundary
- Livestock: Dairy or Feedlot
- Hanford
- Highways
- Simplified Major Structures
- Canals, Creeks, Canyons

Figure 8.
Recently Sampled
Wells (2015 - 2016)
Benton County, WA





Legend

Well Hydrostratigraphy

- unknown completion
- alluvial
- shallow basalt / shallow basalt & alluvial
- shallow basalt
- shallow & intermediate basalt
- intermediate basalt

General Area Boundary
 Hanford
 Simplified Major Structures
 Canals, Creeks, Canyons
 Highways

Figure 8.2.
Benton City - Kiona Area
Recently Sampled
Wells (2015 - 2016)
Benton County, WA

0 0.5 1 2
 Miles

